

PHOTOSHOP - Placing a person inside a picture

In this tutorial you will learn how to place a person inside an image using the "paste into" command.

You can use this technique to achieve all kinds of convincing photo manipulation tricks.

TOOLS

- Layers
- Pen Tool
- Paste Into
- Free Transform

- Difficulty 6/10

To start with you will need 2 pictures.

Using the pen tool draw a loose path around the window.

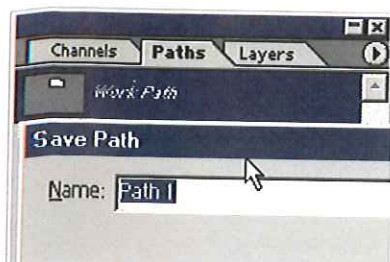
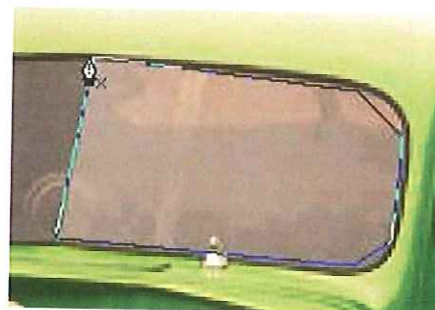


Now switch to the "add anchor point" path tool



Drag the anchor points into place.

To add a curve: Click once on the midway point between 2 anchor points, release the mouse button, then click and drag, you will notice you are now creating a curve. That is the biggest secret to the path tool. A bit of practice and it will be a breeze.



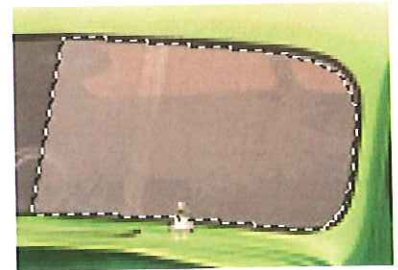
Once you have created the path, go to the paths palette and click, save path.

Now we want to load the path as a selection.

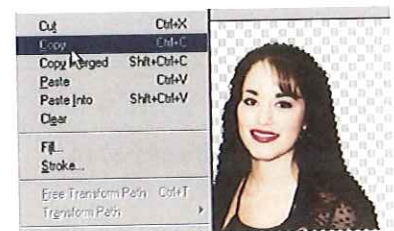
To do this just **ctrl+click** on the paths thumbnail



You now will have a selection around the area we are going to position the person.



Select the person in the 2nd image and choose "copy"



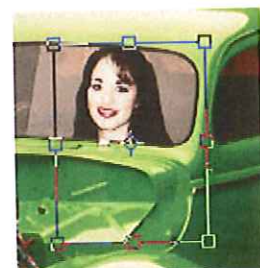
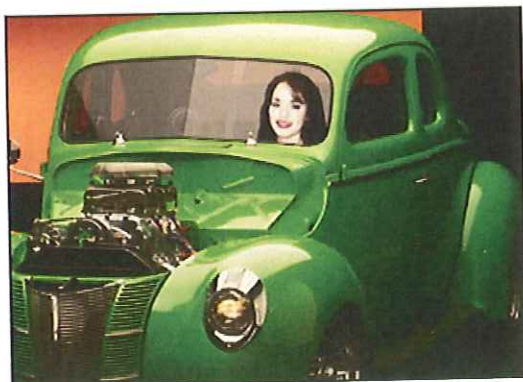
Select the hotrod image again and choose edit>paste into

You will notice a new layer is created with a layer mask around the window.



Press Ctrl +T for free transform

scale and position your person to fit inside the window.

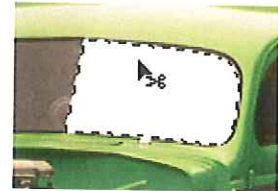


There all nicely positioned and sized in the window.

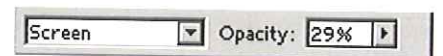
The only problem now is that it looks a bit fake
because the window has a highlight and the person is opaque.



Lets create a highlight for the window.
Load the path of the window shape
create a new layer
Fill with white



Now switch to screen mode and lower the opacity to 29%



There all done.

